

Official Election Guide

Leon County
Florida



**SAMPLE
BALLOT
INSIDE!**

2016 PRIMARY ELECTION
August 30, 2016



@LeonVotes

**Find us with #LeonVotes
or at www.LeonVotes.org**

Ion Sancho
Supervisor of Elections
(850) 606-VOTE (8683)
Vote@LeonCountyFl.gov

**Voter Fraud Hotline (in English and Español):
Toll Free 1-877-868-3737**

To file a formal complaint regarding irregularities or fraud involving voter registration, voting, candidate petition, or issue petition activities, M-F 8:00 am – 5:00 pm EST.



A MESSAGE FROM THE SUPERVISOR OF ELECTIONS ION SANCHO:

“All politics is local,” a famous quote by Thomas “Tip” O’Neill, perfectly sums up the choices faced by Leon County voters in the upcoming August 30th Primary Election. For the first time in my 28-year career all five Constitutional Offices – Supervisor of Elections, Sheriff, Property Appraiser, Tax Collector and Clerk of the Circuit Court and Comptroller – will all be on a ballot this year. A record number of local candidates means all registered voters will have choices to make regardless of political affiliation.

Three non-partisan local races on the Primary ballot (all registered voters can vote in these contests) will elect a Judge, a School Board Member and a City Commissioner. The contests for Supervisor of Elections, City Commission Seat 1, County Commissioner District 2 and School Board District 4 could also be determined if the winner garners more than 50% of the votes cast!

One of the main complaints I often hear from voters leading up to a Primary Election is the refrain, “There are no candidates to vote for.” The August Primary Election makes that statement completely false and if you care about our local government, which provides more than 90% of the services we receive, then make sure you vote on August 30th.

The election in March set a record for a Primary in Leon County at 51% turnout. We expect to break that record for this Primary Election. To accommodate additional voters this year, our Voting Operations Center at 2990-1 Apalachee Parkway will be open for voting from 10:00 am to 6:00 pm on the Sunday immediately before the Primary Election.

As a result of the Florida Supreme Court redistricting decision, our office was required to move 115,000 voters from the 2nd Congressional District to the 5th Congressional District. The change occurred after the March election and in some cases polling places have changed for voters. We

mailed notices to all voters affected but if you have any questions about your voting location please call our office at 850-606-VOTE (8683) or check and update your information at our convenient website LeonVotes.org.

We’re ready to count the votes, all we need is you. Vote as if your life depends on it – because your quality of life does!

2016 ELECTION DATES:

August 30, 2016
Primary Election

November 8, 2016

REGISTER BY TUESDAY, OCTOBER 11
General Election



3 WAYS TO VOTE



3 Ways to



Vote by Mail Ballot



Early Voting



At Your Precinct



VOTE BY MAIL BALLOTS You may request a Vote by Mail Ballot for all elections or a single election. The Supervisor of Elections office must **RECEIVE** your mail ballot by 7 pm on Election Day.



EARLY VOTING It's easy to vote at any one of our early voting locations across Leon County. All sites are open Saturday, August 20th through Saturday, August 27th with times varying by location. Locations and times can be found on our website at LeonVotes.org.



LAST CHANCE TO VOTE! Voting hours are 7 am to 7 pm on Election Day at your assigned polling location. You can verify that we have your information correct by visiting our website using the "My Voter Info" button or you can call us at **(850) 606-VOTE (8683)**.



VOTER'S BILL OF RIGHTS

Each registered voter in this state has the right to:

1. Vote and have her or his vote accurately counted.
2. Cast a vote if he or she is in line at the official closing of the polls in that county.
3. Ask for and receive assistance in voting.
4. Receive up to two replacement ballots if he or she makes a mistake prior to the ballot being cast.
5. An explanation if her or his registration or identity is in question.
6. If his or her registration or identity is in question, cast a provisional ballot.
7. Written instructions to use when voting, and, upon request, oral instructions in voting from Elections Officers.
8. Vote free from coercion or intimidation by Elections Officers or any other person.
9. Vote on a voting system that is in working condition and that will allow votes to be accurately cast.

— FL Dept. of State DS-DE 20



VOTER RESPONSIBILITIES

Each registered voter in this state should:

1. Familiarize herself or himself with the candidates and issues.
2. Maintain with the office of the Supervisor of Elections a current address.
3. Know the location of her or his polling place and its hours of operation.
4. Bring proper identification to the polling station.
5. Familiarize herself or himself with the operation of the voting equipment in his or her precinct.
6. Treat precinct workers with courtesy.
7. Respect the privacy of other voters.
8. Report any problems or violations of Election laws to the Supervisor of Elections.
9. Ask questions, if needed.
10. Make sure that her or his completed ballot is correct before leaving the polling station.

— FL Dept. of State DS-DE 21



ELECTRONIC POLLBOOKS



Electronic pollbooks are an efficient and reliable technology Leon County has used since 2014 and were introduced county-wide in the Presidential Preference Primary this year. All voting locations will be safely and securely connected to our voter database. This connectivity offers many advantages for our voters and pollworkers including:

- Faster and more accurate voter check-in.
- No more lines by last name means faster service! Any available election team member can assist you. Just look for the “Next in Line” floor mat.
- Real time verification of voter information, including address changes and Vote By Mail Ballot status.
- Ability to monitor voter turnout throughout Election Day.



Share your voting experience on Twitter, Facebook or Instagram using #LeonVoting.

(We want to hear from you, but remember Florida law prohibits pictures inside the polling location. Please Tweet responsibly.)

Follow us @LeonVotes for election updates.



VOTING BY MAIL

Request Deadline: Wednesday, August 24

By mail: PO Box 7357

Tallahassee, FL 32314

By Phone: 850-606-8683

Online: LeonVotes.org

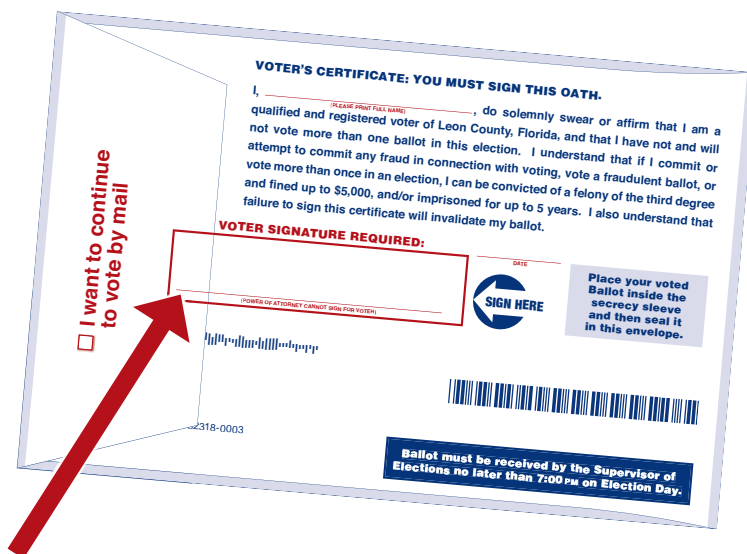
If you forget to sign your Vote by Mail Ballot, you may complete the Unsigned Ballot Affidavit and have it counted.

Unsigned Ballot Affidavit Submission Deadline: Monday, August 29

The Supervisor of Elections office must **RECEIVE** your mail ballot by 7pm on Election Day.

Ballots received after 7pm on Election Day **will not count**.

Vote by Mail ballots are **not** accepted at the polls on Election Day.



Make sure your vote is counted by signing the back of your Vote By Mail Ballot envelope!



PROVISIONAL BALLOTS

ELECTION OFFICIALS: 1. Complete the gray box on the reverse to witness ballot submission.
2. Detach receipt along perforation and provide for voter's records.
3. Complete the gray box beneath the receipt.

«CODE»

VOTER INFORMATION AND RECEIPT

Provisional Ballot Disclosure and Notice of Rights

Today you have been allowed to vote by Provisional Ballot. Your ballot will be securely transported to the Supervisor of Elections Office on election night. Your affidavit will be researched and the findings provided to the Canvassing Board. The Canvassing Board will decide your eligibility and whether or not your vote can be counted in this election.

MY RIGHTS

You have the right to present written evidence supporting your eligibility to vote to the Supervisor of Elections Office no later than 5 pm on the second day following this election. If you voted this ballot because we could not verify your Florida driver's license card number, Florida state identification card number or the last four digits of your social security card number, bring your card in person or provide a copy via mail, fax or email to the Supervisor by the deadline.

If you voted a provisional ballot solely because you did not have the proper photo and signature identification, you do not have to provide any further evidence. Your ballot will be counted if your signature on this envelope matches the signature on your registration record and if you voted in the proper precinct.

You have the right to find out if your ballot was counted, and if not, the reason why. You will receive a letter from the Supervisor of Elections Office advising you of the Canvassing Board's decision. You may also visit our website at LeonVotes.org. Enter your unique code (noted below) to learn the status of your ballot.

IMPORTANT INFORMATION

If this is a primary election, you should contact the Supervisor of Elections Office immediately to confirm that you are registered and can vote in the general election.

If at any time you have questions regarding the voting process or, more specifically, voting by provisional ballot, please contact:

Jon Sancho
Supervisor of Elections
315 S. Calhoun St, Suite 110
Tallahassee, FL 32301

Weekdays from 8:00am until 5:00pm
LeonVotes.org
vote@leoncountyfl.gov
Office number: (850) 606-VOTE (8683)
Fax number: (850) 606-8601

To learn the status of your ballot, visit our website at LeonVotes.org and enter your unique code:

«CODE»

GENTLY REMOVE THIS RECEIPT

A Provisional Ballot is used when an individual's voter eligibility is uncertain. It allows the Supervisor of Elections office to research the matter and determine if the person is eligible to vote.

Voters may track the status of their Provisional Ballot on our website, LeonVotes.org, or by calling our office at 850-606-8683.

Provisional Ballot voters must submit any eligibility documentation to the Supervisor of Elections office by **5:00pm on September 1, 2016**.



EARLY VOTING

August 2016

SUN	MON	TUE	WED	THU	FRI	SAT
	1	2	3	4	5	6
7	8	9	10	11	12	13
14	15	16	17	18	19	20
21	22	23	24	25	26	27
28	29	30	31			

■ = Early Voting Dates

■ = Branch Office Voting at Voting Operations Center only

■ = Election Day

Early Voting Days and Times

Courthouse: 8:00 am – 4:00 pm,
Saturday August 20 through Saturday August 27

Branch Libraries and Community Centers:
10:00 am – 6:00 pm, Saturday through Saturday

Branch Office Voting offered
at Voting Operations Center *(only)*
Sunday August 28 from 10:00 am – 6:00 pm
2990-1 Apalachee Parkway, 32301

EARLY VOTING LOCATIONS:



Woodville Community Center
8000 Old Woodville Road



Northeast Branch Library
5513 Thomasville Road



Leon County Courthouse
301 S. Monroe Street – First Floor Plaza



Dr. B. L. Perry Jr. Branch Library
2817 S. Adams Street



Ft. Braden Branch Library
16327 Blountstown Highway



Eastside Branch Library
1583 Pedrick Road



Lake Jackson Community Center
3840 N. Monroe St., Suite 301

Free Parking Downtown


The Leon County Board of County Commissioners has approved the first hour free for parking downtown if you Early Vote at the Courthouse. The two garages operated by Republic are at Kleman Plaza and the southeast corner of College Avenue and Calhoun Street. ADA accessible parking is provided along Calhoun Street at the public entrance to the Courthouse. Affix your "I VOTED" sticker to your yellow parking ticket.



DEMOCRATIC PARTY BALLOT

This is a generic sample ballot – your ballot may not contain all races listed here.

TUESDAY, AUGUST 30, 2016

- TO VOTE, FILL IN THE OVAL COMPLETELY  NEXT TO YOUR CHOICE. USE ONLY THE MARKER PROVIDED OR A BLACK OR BLUE PEN.
- If you make a mistake, ask for a new ballot. Do not cross out or your vote may not count.

PARTISAN CONTESTS		
United States Senator (Vote for One) <input type="radio"/> Roque "Rocky" De La Fuente <input type="radio"/> Alan Grayson <input type="radio"/> Pam Keith <input type="radio"/> Reginald Luster <input type="radio"/> Patrick Murphy	Precinct 1505 Committeewoman (Vote for up to Two) <input type="radio"/> Chaneka M. Douglas <input type="radio"/> Brenda G. Jones <input type="radio"/> Cynthia Y. Taylor <input type="radio"/> Dorothy W. Taylor	School Board District 2 (Vote for One) <input type="radio"/> Roger Pinholster <input type="radio"/> Rosanne Wood
	Precinct 2305 Committeeman (Vote for up to Two) <input type="radio"/> Gilbert E. Daspit Jr <input type="radio"/> Cameron Issa Montgomery <input type="radio"/> Daniel Pooler <input type="radio"/> Jabari Wheatley	School Board District 4 (Vote for One) <input type="radio"/> Patrick Cannon <input type="radio"/> Tallie Gainer III <input type="radio"/> Dee Dee Rasmussen
	Precinct 3507 Committeeman (Vote for up to Two) <input type="radio"/> Jon M. Ausman <input type="radio"/> Steven Hall <input type="radio"/> Joshua Willoughby	Tallahassee City Commission Seat 1 (Vote for One) <input type="radio"/> Gary Gayle <input type="radio"/> Luther Lee <input type="radio"/> Scott Maddox <input type="radio"/> Bruce W. Strouble Jr
	Precinct 5220 Committeewoman (Vote for up to Two) <input type="radio"/> Kim Armstrong <input type="radio"/> Teresa "Teri" Cariota <input type="radio"/> Natalie Edwards-Heller	Tallahassee City Commission Seat 2 (Vote for One) <input type="radio"/> Steven Hougland <input type="radio"/> Curtis Richardson
State Representative, District 2 (Vote for One) <input type="radio"/> Steve Crapps <input type="radio"/> Walter Dartland	Precinct 5225 Committeeman (Vote for up to Two) <input type="radio"/> Houston Barnes <input type="radio"/> Bruce Alexander Minnick <input type="radio"/> James Louis Moran Jr	PROPOSED CONSTITUTIONAL AMENDMENT No. 4 Constitutional Amendment Article VII, Sections 3 and 4, Article XII, Section 34 Solar Devices or Renewable Energy Source Devices; Exemption From Certain Taxation and Assessment Proposing an amendment to the State Constitution to authorize the Legislature, by general law, to exempt from ad valorem taxation the assessed value of solar or renewable energy source devices subject to tangible personal property tax, and to authorize the Legislature, by general law, to prohibit consideration of such devices in assessing the value of real property for ad valorem taxation purposes. This amendment takes effect January 1, 2018, and expires on December 31, 2037. <input type="radio"/> Yes <input type="radio"/> No
State Representative, District 5 (Vote for One) <input type="radio"/> Corrine Brown <input type="radio"/> LaShonda "L.J." Holloway <input type="radio"/> Al Lawson	NONPARTISAN CONTESTS	
State Attorney, 2nd Judicial Court (Vote for One) <input type="radio"/> Jack Campbell <input type="radio"/> Sean T. Desmond	County Judge, Seat 2 (Vote for One) <input type="radio"/> Monique Richardson <input type="radio"/> Layne Smith	
State Representative, District 8 (Vote for One) <input type="radio"/> Ramon Alexander <input type="radio"/> Clarence Jackson <input type="radio"/> Brad "LBJ" Johnson <input type="radio"/> Dianne Williams-Cox	Supervisor of Elections (Vote for One) <input type="radio"/> Mark S. Earley <input type="radio"/> Tena M. Pate <input type="radio"/> Alan Williams	
State Representative, District 9 (Vote for One) <input type="radio"/> Loranne Ausley <input type="radio"/> Arnitta "Nita Jane" Grice-Walker <input type="radio"/> Josh Johnson	County Commissioner, District 2 (Vote for One) <input type="radio"/> Jeffery W. Bullock <input type="radio"/> Nancy L. Calhoun <input type="radio"/> Howard Font <input type="radio"/> Margaret Franklin <input type="radio"/> Kirk Headley-Perdue <input type="radio"/> Jimbo Jackson <input type="radio"/> Manny Joanos <input type="radio"/> T.J. Lewis	
Clerk of the Circuit Court and Comptroller (Vote for One) <input type="radio"/> Bill Bogan <input type="radio"/> Barry Brooks <input type="radio"/> Gwen Marshall		
Property Appraiser (Vote for One) <input type="radio"/> Akin Akinyemi <input type="radio"/> Clay Ketcham <input type="radio"/> Doug Will		
Superintendent of Schools (Vote for One) <input type="radio"/> Woody Hildebrandt <input type="radio"/> Jackie Pons		


SPECIAL PULL OUT SECTION

Preview your actual ballot style on our website LeonVotes.org

REPUBLICAN PARTY BALLOT

This is a generic sample ballot – your ballot may not contain all races listed here.

TUESDAY, AUGUST 30, 2016

- TO VOTE, FILL IN THE OVAL COMPLETELY  NEXT TO YOUR CHOICE. USE ONLY THE MARKER PROVIDED OR A BLACK OR BLUE PEN.
- If you make a mistake, ask for a new ballot. Do not cross out or your vote may not count.

PARTISAN CONTESTS		
United States Senator (Vote for One) <input type="radio"/> Carlos Beruff <input type="radio"/> Ernie Rivera <input type="radio"/> Marco Rubio <input type="radio"/> Dwight Mark Anthony Young	Supervisor of Elections (Vote for One) <input type="radio"/> Mark S. Earley <input type="radio"/> Tena M. Pate <input type="radio"/> Alan Williams	Tallahassee City Commission Seat 1 (Vote for One) <input type="radio"/> Gary Gayle <input type="radio"/> Luther Lee <input type="radio"/> Scott Maddox <input type="radio"/> Bruce W. Strouble Jr
Representative in Congress District 2 (Vote for One) <input type="radio"/> Neal Dunn <input type="radio"/> Ken Sukhia <input type="radio"/> Mary Thomas	County Commissioner District 2 (Vote for One) <input type="radio"/> Jeffery W. Bullock <input type="radio"/> Nancy L. Calhoun <input type="radio"/> Howard Font <input type="radio"/> Margaret Franklin <input type="radio"/> Kirk Headley-Perdue <input type="radio"/> Jimbo Jackson <input type="radio"/> Manny Joanos <input type="radio"/> T.J. Lewis	Tallahassee City Commission Seat 2 (Vote for One) <input type="radio"/> Steven Hougland <input type="radio"/> Curtis Richardson
State Committeewoman (Vote for One) <input type="radio"/> Dorothy Lee "Dotty" McPherson <input type="radio"/> Caitlin Murray	School Board District 2 (Vote for One) <input type="radio"/> Roger Pinholster <input type="radio"/> Rosanne Wood	PROPOSED CONSTITUTIONAL AMENDMENT No. 4 Constitutional Amendment Article VII, Sections 3 and 4, Article XII, Section 34 Solar Devices or Renewable Energy Source Devices; Exemption From Certain Taxation and Assessment Proposing an amendment to the State Constitution to authorize the Legislature, by general law, to exempt from ad valorem taxation the assessed value of solar or renewable energy source devices subject to tangible personal property tax, and to authorize the Legislature, by general law, to prohibit consideration of such devices in assessing the value of real property for ad valorem taxation purposes. This amendment takes effect January 1, 2018, and expires on December 31, 2037. <input type="radio"/> Yes <input type="radio"/> No
Precinct 5201 Committeeman (Vote for up to Two) <input type="radio"/> Faron Boggs <input type="radio"/> Jeff Howell <input type="radio"/> Tim Nungesser	School Board District 4 (Vote for One) <input type="radio"/> Patrick Cannon <input type="radio"/> Tallie Gainer III <input type="radio"/> Dee Dee Rasmussen	
NONPARTISAN CONTESTS		
County Judge Seat 2 (Vote for One) <input type="radio"/> Monique Richardson <input type="radio"/> Layne Smith		




POLLS OPEN
7 AM – 7 PM
AUGUST 30, 2016

Preview your actual ballot style on our website LeonVotes.org

LIBERTARIAN PARTY BALLOT

This is a generic sample ballot – your ballot may not contain all races listed here.

TUESDAY, AUGUST 30, 2016

- TO VOTE, FILL IN THE OVAL COMPLETELY  NEXT TO YOUR CHOICE. USE ONLY THE MARKER PROVIDED OR A BLACK OR BLUE PEN.
- If you make a mistake, ask for a new ballot. Do not cross out or your vote may not count.

PARTISAN CONTEST		PROPOSED CONSTITUTIONAL AMENDMENT
United States Senator (Vote for One) <input type="radio"/> Augustus Invictus <input type="radio"/> Paul Stanton	School Board District 2 (Vote for One) <input type="radio"/> Roger Pinholster <input type="radio"/> Rosanne Wood	No. 4 Constitutional Amendment Article VII, Sections 3 and 4, Article XII, Section 34 Solar Devices or Renewable Energy Source Devices; Exemption From Certain Taxation and Assessment Proposing an amendment to the State Constitution to authorize the Legislature, by general law, to exempt from ad valorem taxation the assessed value of solar or renewable energy source devices subject to tangible personal property tax, and to authorize the Legislature, by general law, to prohibit consideration of such devices in assessing the value of real property for ad valorem taxation purposes. This amendment takes effect January 1, 2018, and expires on December 31, 2037. <input type="radio"/> Yes <input type="radio"/> No
NONPARTISAN CONTESTS	School Board District 4 (Vote for One) <input type="radio"/> Patrick Cannon <input type="radio"/> Tallie Gainer III <input type="radio"/> Dee Dee Rasmussen	
County Judge Seat 2 (Vote for One) <input type="radio"/> Monique Richardson <input type="radio"/> Layne Smith	Tallahassee City Commission Seat 1 (Vote for One) <input type="radio"/> Gary Gayle <input type="radio"/> Luther Lee <input type="radio"/> Scott Maddox <input type="radio"/> Bruce W. Strouble Jr	
Supervisor of Elections (Vote for One) <input type="radio"/> Mark S. Earley <input type="radio"/> Tena M. Pate <input type="radio"/> Alan Williams	Tallahassee City Commission Seat 2 (Vote for One) <input type="radio"/> Steven Hougland <input type="radio"/> Curtis Richardson	
County Commissioner District 2 (Vote for One) <input type="radio"/> Jeffery W. Bullock <input type="radio"/> Nancy L. Calhoun <input type="radio"/> Howard Font <input type="radio"/> Margaret Franklin <input type="radio"/> Kirk Headley-Perdue <input type="radio"/> Jimbo Jackson <input type="radio"/> Manny Joanos <input type="radio"/> T.J. Lewis		



POLLS OPEN
7 AM – 7 PM
AUGUST 30, 2016


SPECIAL PULL OUT SECTION

Preview your actual ballot style on our website LeonVotes.org

NONPARTISAN BALLOT

This is a generic sample ballot – your ballot may not contain all races listed here.

TUESDAY, AUGUST 30, 2016

- TO VOTE, FILL IN THE OVAL COMPLETELY  NEXT TO YOUR CHOICE. USE ONLY THE MARKER PROVIDED OR A BLACK OR BLUE PEN.
- If you make a mistake, ask for a new ballot. Do not cross out or your vote may not count.

NONPARTISAN CONTESTS		PROPOSED CONSTITUTIONAL AMENDMENT
County Judge Seat 2 (Vote for One) <input type="radio"/> Monique Richardson <input type="radio"/> Layne Smith	School Board District 2 (Vote for One) <input type="radio"/> Roger Pinholster <input type="radio"/> Rosanne Wood	No. 4 Constitutional Amendment Article VII, Sections 3 and 4, Article XII, Section 34 Solar Devices or Renewable Energy Source Devices; Exemption From Certain Taxation and Assessment Proposing an amendment to the State Constitution to authorize the Legislature, by general law, to exempt from ad valorem taxation the assessed value of solar or renewable energy source devices subject to tangible personal property tax, and to authorize the Legislature, by general law, to prohibit consideration of such devices in assessing the value of real property for ad valorem taxation purposes. This amendment takes effect January 1, 2018, and expires on December 31, 2037. <input type="radio"/> Yes <input type="radio"/> No
Supervisor of Elections (Vote for One) <input type="radio"/> Mark S. Earley <input type="radio"/> Tena M. Pate <input type="radio"/> Alan Williams	School Board District 4 (Vote for One) <input type="radio"/> Patrick Cannon <input type="radio"/> Tallie Gainer III <input type="radio"/> Dee Dee Rasmussen	
County Commissioner District 2 (Vote for One) <input type="radio"/> Jeffery W. Bullock <input type="radio"/> Nancy L. Calhoun <input type="radio"/> Howard Font <input type="radio"/> Margaret Franklin <input type="radio"/> Kirk Headley-Perdue <input type="radio"/> Jimbo Jackson <input type="radio"/> Manny Joanos <input type="radio"/> T.J. Lewis	Tallahassee City Commission Seat 1 (Vote for One) <input type="radio"/> Gary Gayle <input type="radio"/> Luther Lee <input type="radio"/> Scott Maddox <input type="radio"/> Bruce W. Strouble Jr	
	Tallahassee City Commission Seat 2 (Vote for One) <input type="radio"/> Steven Hougland <input type="radio"/> Curtis Richardson	



**POLLS OPEN
7 AM – 7 PM
AUGUST 30, 2016**

Preview your actual ballot style on our website LeonVotes.org



PLEASE REMEMBER YOUR PHOTO ID

Bring your photo ID with you when you vote

In-person voting in Florida requires a valid ID containing a photo and/or signature. The photo and signature can come from different IDs, but they must be one of the following:

- FL Driver's License
- FL Identification Card
- US Passport
- Debit or Credit Card
- Military ID
- Student ID
- Retirement Center ID
- Neighborhood Association ID
- Public Assistance ID
- Veteran Health ID issued by the United States Department of Veterans Affairs
- A Concealed Weapon/Firearm License issued pursuant to §790.06, F.S.
- Employee ID issued by any branch, department, agency or entity of the Federal Government, the State, a county or a municipality.



If you are not able to produce proper ID, you will be required to vote a Provisional Ballot.



**POLLS OPEN
7 AM – 7 PM
AUGUST 30, 2016**

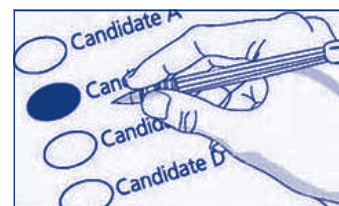


VOTING YOUR BALLOT



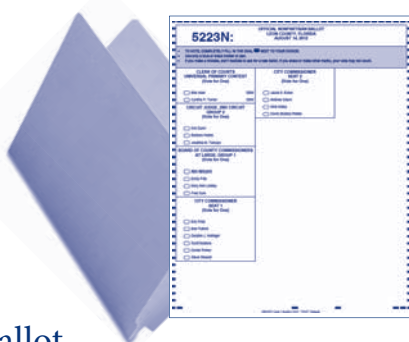
1 Fill in Ballot Correctly

COMPLETELY fill in the oval to the left of the candidate or issue of your choice.



2 Review Your Ballot

If you wish to change or correct your vote, let a poll worker know so you may be issued a new ballot.



You are allowed up to 3 tries to properly mark your ballot.

3 Cast Your Ballot

1. Place your ballot into the voting machine.
2. Wait for the machine to accept your ballot.
3. Return the privacy folder to the Machine Inspector and exit the voting area.

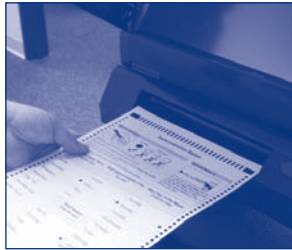


One Voice
One System
Voter Equality

VOTING USING AN ACCESSIBLE VOTING SESSION

1 Insert Your Ballot

1. Provide the Accessible Audit Ticket to the Machine Inspector who will customize your voting session to your needs.



2. Insert your blank ballot into the machine to begin your Accessible Voting Session.

2 Use the Controller or Your Device

Use the controller or plug your sip/puff or paddleboard device into the 3.5mm port on the controller to navigate through your voting session.



3 Follow the Instructions

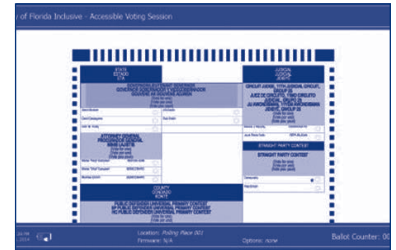
Customize your voting session using the navigation instructions to:

1. Increase/Decrease the audio volume.
2. Change the rate of the audio speed.
3. Change the ballot zoom.
4. Change the contrast level.



4 Select Candidates

Using the controller or your device, make your selections as you move through the races on your ballot.



You will be able to see and/or hear your selections as you progress through your ballot. You can always make changes as needed.

5 Review Your Ballot

When you finish voting, you have the option to review your selections and make final changes before casting your ballot.



6 Print and Cast Your Ballot

Once satisfied with your selections, you will instruct the voting machine to mark your ballot and cast it for you.

Your vote has counted and you may now exit the voting area.





LEON COUNTY POLLING LOCATIONS BY PRECINCT

PRECINCT LOCATION	ADDRESS
1203 John Wesley United Methodist Church	1689 Old Saint Augustine Rd
1205 Hilaman Park Golf Course	2737 Blairstone Rd
1230 Hilaman Park Golf Course	2737 Blairstone Rd
1251 Jack L. McLean Center	700 Paul Russell Rd
1255 Faith Christian Family Center	310 Laura Lee Ave
1257 Woodville Community Center	8000 Old Woodville Rd
1258 Faith Christian Family Center	310 Laura Lee Ave
1259 Southwood Community Center	4675 Grove Park Dr
1301 Lincoln Neighborhood Center	438 W Brevard St
1302 Lincoln Neighborhood Center	438 W Brevard St
1303 Palmer Munroe Teen Center	1900 Jackson Bluff Rd
1309 St. Eugene Catholic Chapel	701 Gamble St
1311 Bethel AME Church	501 Orange Ave W
1313 Smith-Williams Service Center	2295 Pasco St
1314 FSU Oglesby Union	75 N Woodward Ave
1315 Jacob Chapel Baptist Church	2333 Lake Bradford Rd
1317 Jake Gaither Community Center	801 Tanner Dr
1319 Bethel AME Church	501 Orange Ave W
1321 Jack L. McLean Center	700 Paul Russell Rd
1327 Southwood Baptist Church	5177 Capital Circle SW
1351 Jacob Chapel Baptist Church	2333 Lake Bradford Rd
1353 Jacob Chapel Baptist Church	2333 Lake Bradford Rd
1355 Southwood Baptist Church	5177 Capital Circle SW
1359 Southwood Baptist Church	5177 Capital Circle SW
1361 Woodville Community Center	8000 Old Woodville Rd
1362 Woodville Community Center	8000 Old Woodville Rd
1501 Family Worship and Praise Center	1609 Branch St
1502 Family Worship and Praise Center	1609 Branch St
1503 Lawrence-Gregory Community Center	1115 Dade Rd
1505 Springfield Community Center	1702 Joe Louis St
1507 FSU Oglesby Union	75 N Woodward Ave
2251 Woodville Community Center	8000 Old Woodville Rd
2252 Woodville Community Center	8000 Old Woodville Rd
2253 Woodville Community Center	8000 Old Woodville Rd
2303 St. City Ministries	1415 Daniels St
2305 Tallahassee Community College – AMTC Building	3958 W Pensacola St
2307 Crossway Baptist Church	405 Crossway Rd
2355 Jacob Chapel Baptist Church	2333 Lake Bradford Rd

PRECINCT LOCATION	ADDRESS
2358 Tallahassee Community College – AMTC Building	3958 W Pensacola St
2359 Bethel Methodist Church	1470 Bethel Church Rd
2363 Crossway Baptist Church	405 Crossway Rd
2365 Fort Braden Community Center	16387 Blountstown Hwy
2366 Crossway Baptist Church	405 Crossway Rd
2380 Generations Church	3080 W Tennessee St
2401 Moose Lodge	1478 Capital Cir NW
2451 Bethel Methodist Church	1470 Bethel Church Rd
2502 Palmer Munroe Teen Center	1900 Jackson Bluff Rd
2503 FSU Oglesby Union	75 N Woodward Ave
2504 Palmer Munroe Teen Center	1900 Jackson Bluff Rd
2506 Calvary United Methodist Church	218 Ausley Rd
2507 Hillside Community Church	1319 High Rd
2509 Mission San Luis	2100 W Tennessee St
2511 Generations Church	3080 W Tennessee St
2513 Moose Lodge	1478 Capital Cir NW
3101 Freedom Church 1 st Assembly of God	2801 Thomasville Rd
3103 Thomasville Road Baptist Church	3131 Thomasville Rd
3104 Thomasville Road Baptist Church	3131 Thomasville Rd
3107 Impact Church	3361 Raymond Diehl Business Lane Road
3109 Immanuel Baptist Church	2351 Mahan Dr
3110 Immanuel Baptist Church	2351 Mahan Dr
3401 Taoist Tai Chi Society	2100 Thomasville Rd
3403 The Episcopal Church of the Advent	815 Piedmont Dr
3405 Freedom Church 1 st Assembly of God	2801 Thomasville Rd
3409 Gray Memorial United Methodist Church	2201 Old Bainbridge Rd
3411 Lake Jackson Community Center	3840 N Monroe St
3412 Lake Jackson Community Center	3840 N Monroe St
3413 Wildwood Presbyterian Church	100 Ox Bottom Rd
3414 Wildwood Presbyterian Church	100 Ox Bottom Rd
3451 Freedom Church 1 st Assembly of God	2801 Thomasville Rd
3453 Candlewood Suites	2815 Lakeshore Dr W
3455 Unitarian Universalist Church	2810 N Meridian Rd
3457 Fellowship Baptist Church	3705 N Monroe St
3459 Fellowship Baptist Church	3705 N Monroe St
3461 Lake Jackson Community Center	3840 N Monroe St
3467 St. Louis Catholic Church	3640 Fred George Rd
3468 Seminole Baptist Church	3330 Mission Rd



LEON COUNTY POLLING LOCATIONS BY PRECINCT

PRECINCT LOCATION	ADDRESS
3469 Northwoods Baptist Church	3762 Capital Circle NW
3473 Friendship AME Church	5975 Old Bainbridge Rd
3475 Wildwood Presbyterian Church	100 Ox Bottom Rd
3477 Bethelonia AME Church	8997 N Meridian Rd
3501 Faith Presbyterian Church	2200 N Meridian Rd
3507 Gray Memorial United Methodist Church	2201 Old Bainbridge Rd
3509 Marzuq Shrine Center	1805 N Monroe St
3513 Seminole Baptist Church	3330 Mission Rd
3551 Candlewood Suites	2815 Lakeshore Dr W
4101 Premier Health & Fitness Center	3521 Maclay Blvd
4103 Fellowship Presbyterian Church	3158 Shamrock S
4105 St. Peters Prim. Bap. Church	2565 Centerville Rd
4106 St. Peters Prim. Bap. Church	2565 Centerville Rd
4107 St. Peters Prim. Bap. Church	2565 Centerville Rd
4119 Good Shepherd Catholic Church	4665 Thomasville Rd
4125 Celebration Baptist Church	3300 Shamrock E
4152 Westminster Oaks	1221 Commencement Cove
4153 Tallahassee Heights United Methodist Church	3004 Mahan Dr
4154 Tallahassee Heights United Methodist Church	3004 Mahan Dr
4155 Westminster Oaks	1221 Commencement Cove
4157 Lighthouse Childrens Home	7771 Mahan Dr
4159 Miccosukee Community Center	13887 Moccasin Gap Rd
4161 The Retreat at Bradleys Pond	9002 Bradley Rd
4162 Calvary Chapel	8614 Mahan Dr
4163 Fellowship Presbyterian Church	3158 Shamrock S
4167 Four Oaks Community Church	4500 W Shannon Lakes Dr
4168 Four Oaks Community Church	4500 W Shannon Lakes Dr
4173 Indian Springs Baptist Church	5593 Veterans Memorial Dr
4184 St. Peters Prim. Bap. Church	2565 Centerville Rd
4401 Community of Christ Church	400 Timberlane Rd
4403 Good Shepherd Catholic Church	4665 Thomasville Rd
4405 Wildwood Presbyterian Church	100 Ox Bottom Rd
4408 Summerbrooke Golf Club	7505 Preservation Rd
4451 Premier Health & Fitness Center	3521 Maclay Blvd
4453 FL Association of Court Clerks	3544 Maclay Blvd
4455 Christ Presbyterian Church	2317 Bannerman Rd
4456 Christ Presbyterian Church	2317 Bannerman Rd
4457 Canopy Roads Baptist Church	925 Bannerman Rd

PRECINCT LOCATION	ADDRESS
4458 Canopy Roads Baptist Church	925 Bannerman Rd
4459 Epiphany Lutheran Church	8300 Deerlake Rd
4461 Deer Lake United Methodist	8013 Deerlake Rd S
5101 Westminster Gardens	301 E Carolina St
5103 Courtyard Marriott	1018 Apalachee Pkwy
5105 Sue H. McCollum Community Center	501 Ingleside Ave
5107 St. Stephens Lutheran Church	2198 N Meridian Rd
5110 United Church of Tallahassee	1834 Mahan Dr
5115 Grace Lutheran Church	2919 Miccosukee Rd
5153 Calvary Chapel	8614 Mahan Dr
5154 Lighthouse Childrens Home	7771 Mahan Dr
5165 Grace Lutheran Church	2919 Miccosukee Rd
5201 Parks & Recreation Dept.	912 Myers Park Dr
5203 Optimist Park	1806 Indianhead Dr E
5204 Parks & Recreation Dept.	912 Myers Park Dr
5205 John Wesley United Methodist Church	1689 Old Saint Augustine Rd
5207 Jackson Lodge	2818 Apalachee Pkwy
5209 Tallahassee Elks Lodge	276 N Magnolia Dr
5211 Towne East Baptist Church	1055 Richview Rd
5212 Capital City Christian Church	6115 Mahan Dr
5214 First Church of the Nazarene	1983 Mahan Dr
5219 Life Point Church	1224 Pedrick Rd
5220 Piney Z Plantation Lodge	950 Piney Z Plantation Rd
5221 Dept. of Agriculture Complex	3125 Conner Blvd
5223 Gospel Light Church	3415 Apalachee Pkwy
5224 Gospel Light Church	3415 Apalachee Pkwy
5225 Southwood Community Center	4675 Grove Park Dr
5227 Tallahassee Heights United Methodist Church	3004 Mahan Dr
5228 Life Point Church	1224 Pedrick Rd
5251 Morningside Baptist Church	1560 Pedrick Rd
5252 Morningside Baptist Church	1560 Pedrick Rd
5258 Gospel Light Church	3415 Apalachee Pkwy
5260 Woodrun Baptist Church	8203 Apalachee Pkwy
5261 Celebrate New Life Church	3050 Agape Ln
5263 Dorothy Spence Community Center	4768 Chaires Cross Rd
5264 Dorothy Spence Community Center	4768 Chaires Cross Rd
5265 Dorothy Spence Community Center	4768 Chaires Cross Rd
5284 Capital City Christian Church	6115 Mahan Dr
9000 Supervisor of Elections Office	315 S Calhoun St



ION SANCHO
Supervisor of Elections
P.O. Box 7357
Tallahassee, FL 32314



Non-Profit Org.
U.S. Postage
PAID
Tallahassee, FL
Permit No. 706

**SAMPLE
BALLOT
INSIDE!**

Your Vote... Your Voice!

POLLS OPEN 7AM – 7PM

OFFICIAL ELECTION GUIDE

**2016 PRIMARY ELECTION
August 30, 2016**

**SUPERVISOR OF ELECTIONS
LEON COUNTY, FLORIDA**